

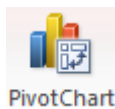
Microsoft Excel Pivot Table Chart



Pivot Table Chart

A Pivot Chart report displays the Pivot table data in a graphical representation, there are extensive chart types to select from.

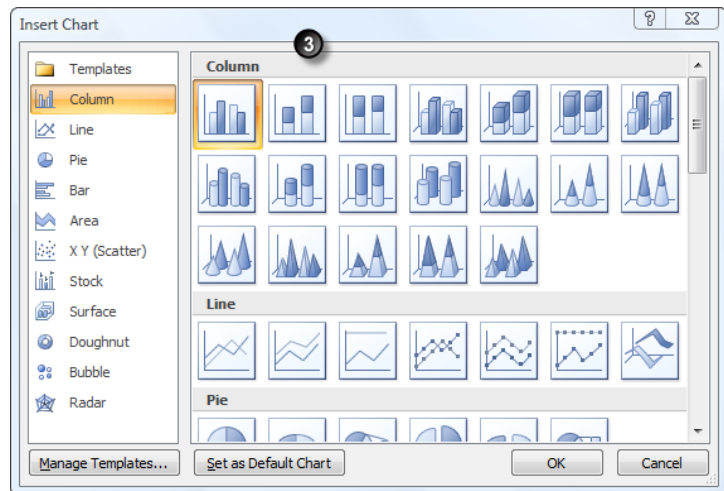
1. **Place** the cursor within the PivotTable data.
2. Select from the PivotTable **Tools** → **Options** tab → **PivotChart** icon.



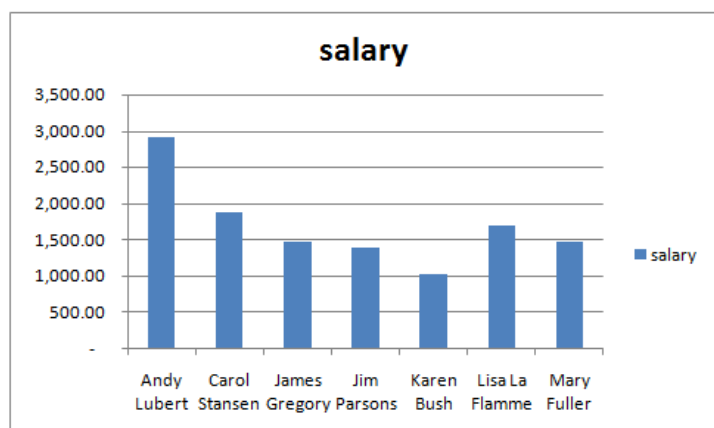
3. The Insert Chart dialog box is displayed.

Select the type of chart required.

Click **Ok**.



4. The chart representing the PivotTable data is added to the worksheet.

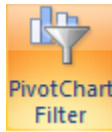


Data displayed may be modified by using the Pivot Chart Filter Pane.

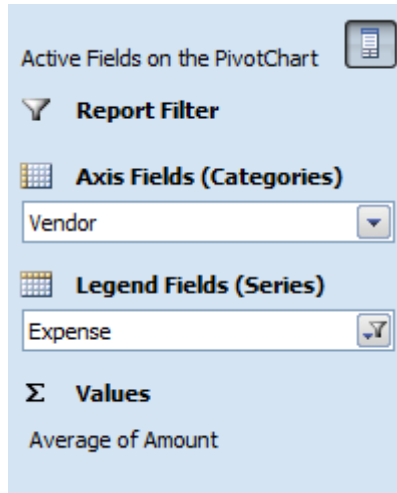
Tip: Select the PivotChart, the filter option will only be accessed when the chart is selected.

PivotTable Filter.

1. Select from the **PivotTable Tools** → **Analyze** → **PivotChart Filter Pane**

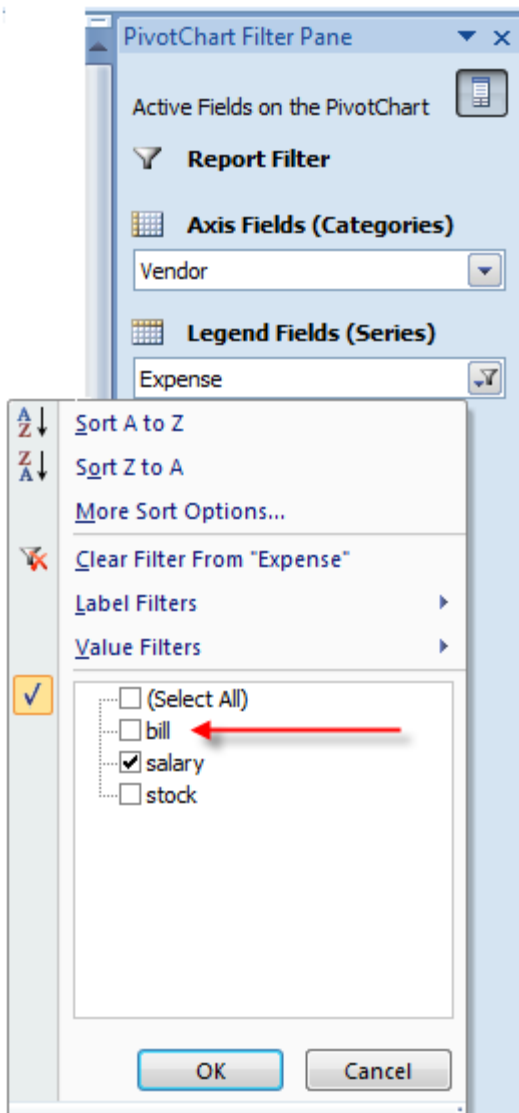


The active fields on the PivotChart Dialog box is displayed.



Select which axis (Axis Fields or Legend Fields) which you require to amend.

In this example we have added "bill" to the Legend Fields (series).



Once the "bill" has been selected the chart will now display the additional data.

