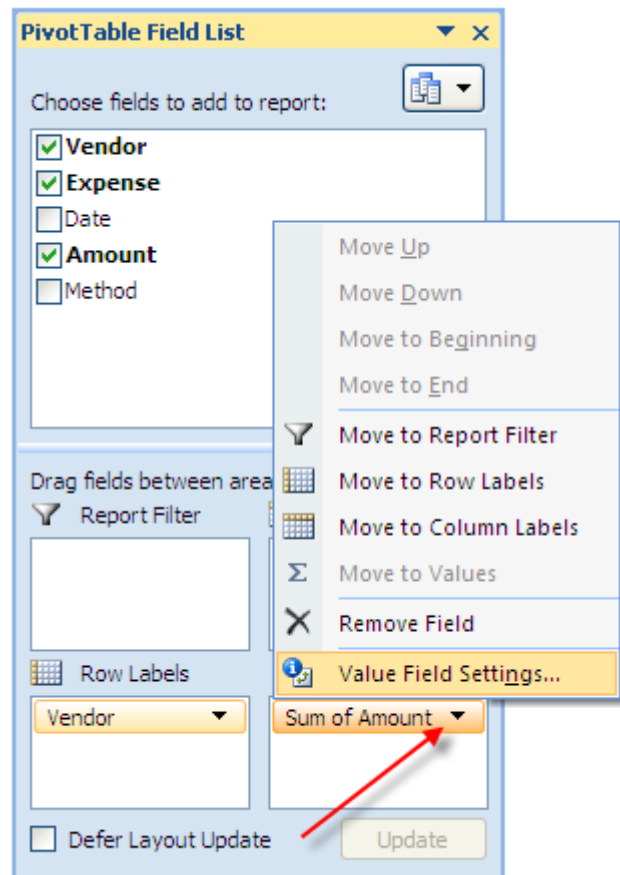


Microsoft Excel - Changing Pivot Table Calculations



Changing Pivot Table Calculations.

1. From the **Sum of Amount** drop down arrow, select the option **Value Field Settings**.

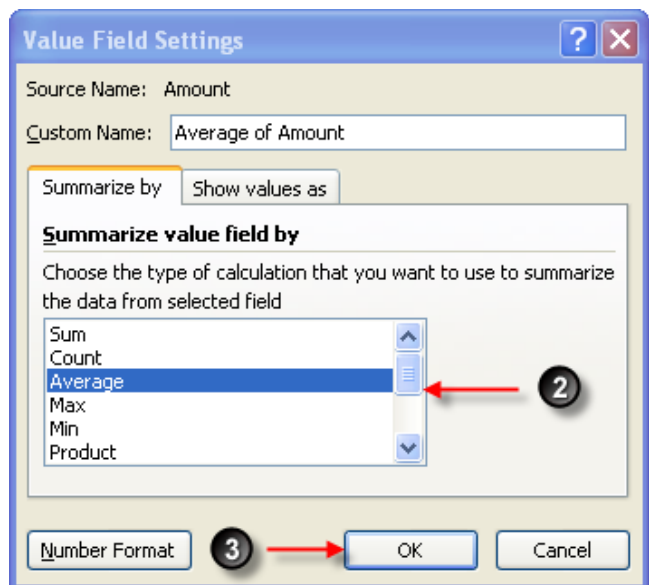


The **Value list Setting** dialog box is displayed.

2. **Select** the required function.
3. **Ok** button.

The calculations on the Pivot Table will update automatically.

In this example we changed the function from **Sum** to **Average**.



	A	B	C	D	E	F	G	H	I	
1	Drop Page Fields Here									
2										
3	Average of Amount	Expense								
4	Vendor	bill	salary	stock	Grand Total					
5	A.B. Properties	1,416.67			1,416.67					
6	Ace Power & Light	566.00			566.00					
7	Andy Lubert		2,916.67		2,916.67					
8	AR Office	5,000.00			5,000.00					
9	Carol Stansen		1,877.39		1,877.39					
10	City of Franklin	420.61			420.61					
11	James Gregory		1,458.33		1,458.33					
12	Jim Parsons		1,378.13		1,378.13					
13	Karen Bush		1,020.83		1,020.83					
14	Lisa La Flamme		1,691.67		1,691.67					
15	Mary Fuller		1,458.33		1,458.33					
16	Ralph J Cook Garbage	200.00			200.00					
17	SW Wholesale			15,649.50	15,649.50					
18	Wheelin's Gas Co.	600.00			600.00					
19	Grand Total	1,345.00	1,684.76	15,649.50	1,926.91					
20										
21										
22										
23										
24										
25										
26										
27										

