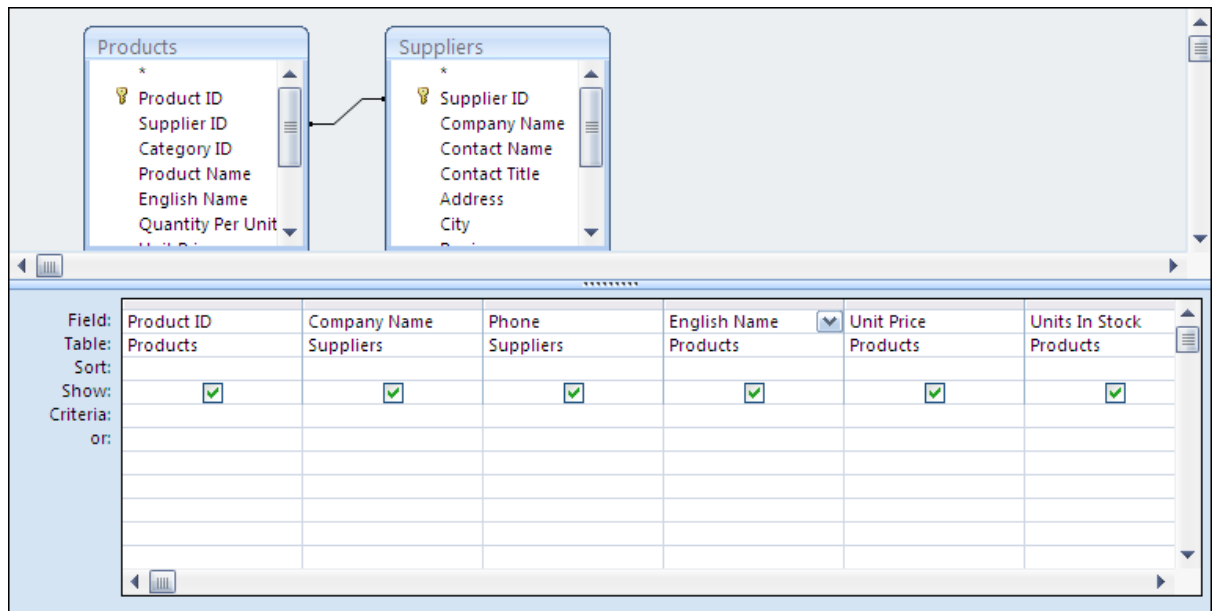


# Microsoft Access – Join Types



## Join Types

If the query is based on more than one object there needs to be a relationship between the different objects otherwise the result of the query will be meaningless.



This query shows that there is a relationship between the tables Products and Suppliers, so it will only show the supplier information for the products records that are there. As the join is equal, if there are any products that do not have the supplier information filled in then it will not show those products.

As long as the data is complete in all the fields then the number to records returned by this type of query should equal the number of records in the larger table, but with incomplete data it could be less than the number of records in the larger table.

# Microsoft Access – Join Types

QryProductList

Product	Company Name	Phone	English Name	Unit Pr	Units In Stc	Stock value
1	Exotic Liquids	(71) 555-222	Dharamsala Tea	£18.00	39	£702
2	Exotic Liquids	(71) 555-222	Tibetan Barley Beer	£19.00	17	£323
3	Exotic Liquids	(71) 555-222	Licorice Syrup	£10.00	13	£130
4	New Orleans Cajun Delights	(100) 555-48	Chef Anton's Cajun Seaso	£22.00	53	£1,166
5	New Orleans Cajun Delights	(100) 555-48	Chef Anton's Gumbo Mix	£21.35	0	£0
65	New Orleans Cajun Delights	(100) 555-48	Louisiana Fiery Hot Peppe	£21.05	76	£1,599
66	New Orleans Cajun Delights	(100) 555-48	Louisiana Hot Spiced Okra	£17.00	4	£68
6	Grandma Kelly's Homestead	(313) 555-57	Grandma's Boysenberry S	£25.00	120	£3,000
7	Grandma Kelly's Homestead	(313) 555-57	Uncle Bob's Organic Dried	£30.00	15	£450
8	Grandma Kelly's Homestead	(313) 555-57	Northwoods Cranberry Sa	£40.00	6	£240
9	Tokyo Traders	(03) 3555-50	Mishi Kobe Beef	£97.00	29	£2,813
10	Tokyo Traders	(03) 3555-50	Fish Roe	£31.00	31	£961
74	Tokyo Traders	(03) 3555-50	Longlife Bean Curd	£10.00	4	£40
11	Cooperativa de Quesos 'Las Cab	(98) 598 76 5	Cabrales Cheese	£21.00	22	£462
12	Cooperativa de Quesos 'Las Cab	(98) 598 76 5	Manchego La Pastora Che	£38.00	86	£3,268
13	Mayumi's	(06) 431-787	Kelp Seaweed	£6.00	24	£144
14	Mayumi's	(06) 431-787	Bean Curd	£23.25	35	£813

Record: 14 of 77

Products

- Product ID
- Supplier ID
- Category ID
- Product Name
- English Name
- Quantity Per Unit

Suppliers

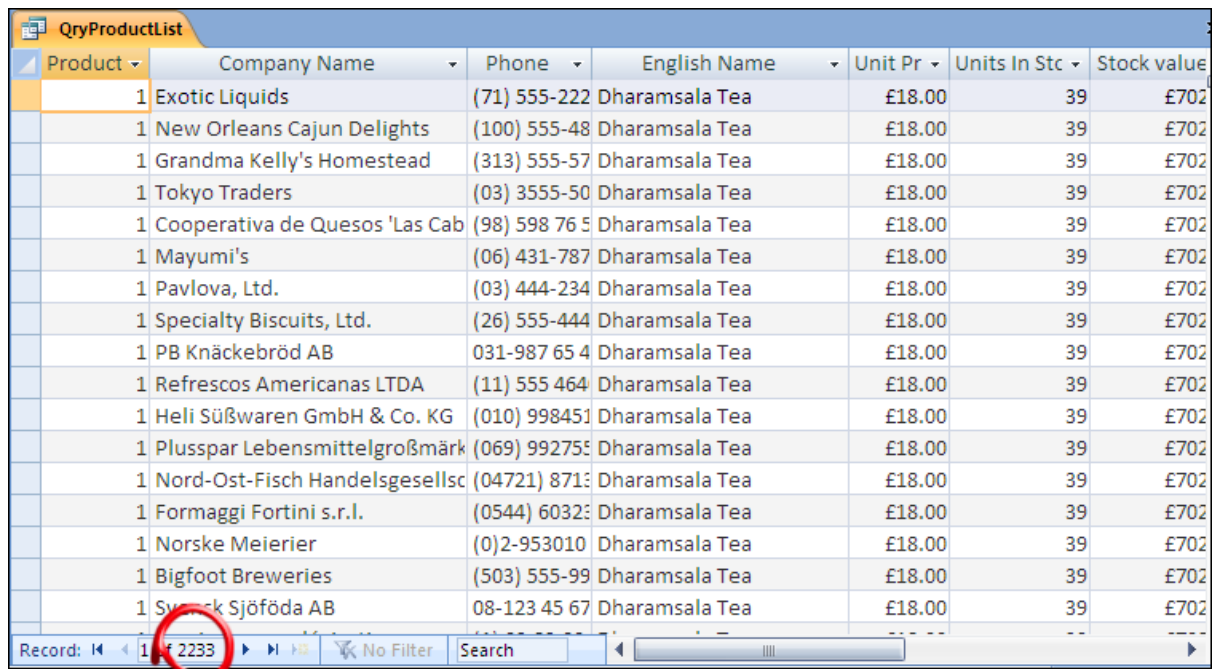
- Supplier ID
- Company Name
- Contact Name
- Contact Title
- Address
- City

Field:	Product ID	Company Name	Phone	English Name	Unit Price	Units In Stock
Table:	Products	Suppliers	Suppliers	Products	Products	Products
Show:	<input checked="" type="checkbox"/>	<input checked="" type="checkbox"/>	<input checked="" type="checkbox"/>	<input checked="" type="checkbox"/>	<input checked="" type="checkbox"/>	<input checked="" type="checkbox"/>
Criteria:						
or:						

If the join between the two tables is removed then the query will assume that every product in the products table is being supplied by every supplier in the suppliers table. The resultant

# Microsoft Access – Join Types

dynaset then has a multiple number of records from the two tables.



Product	Company Name	Phone	English Name	Unit Pr	Units In Stc	Stock value
1	Exotic Liquids	(71) 555-222	Dharamsala Tea	£18.00	39	£702
1	New Orleans Cajun Delights	(100) 555-48	Dharamsala Tea	£18.00	39	£702
1	Grandma Kelly's Homestead	(313) 555-57	Dharamsala Tea	£18.00	39	£702
1	Tokyo Traders	(03) 3555-50	Dharamsala Tea	£18.00	39	£702
1	Cooperativa de Quesos 'Las Cab	(98) 598 76 5	Dharamsala Tea	£18.00	39	£702
1	Mayumi's	(06) 431-787	Dharamsala Tea	£18.00	39	£702
1	Pavlova, Ltd.	(03) 444-234	Dharamsala Tea	£18.00	39	£702
1	Specialty Biscuits, Ltd.	(26) 555-444	Dharamsala Tea	£18.00	39	£702
1	PB Knäckebröd AB	031-987 65 4	Dharamsala Tea	£18.00	39	£702
1	Refrescos Americanas LTDA	(11) 555 464	Dharamsala Tea	£18.00	39	£702
1	Heli Süßwaren GmbH & Co. KG	(010) 998451	Dharamsala Tea	£18.00	39	£702
1	Pluspar Lebensmittelgroßmärk	(069) 992755	Dharamsala Tea	£18.00	39	£702
1	Nord-Ost-Fisch Handelsgesellsc	(04721) 8713	Dharamsala Tea	£18.00	39	£702
1	Formaggi Fortini s.r.l.	(0544) 60323	Dharamsala Tea	£18.00	39	£702
1	Norske Meierier	(0)2-953010	Dharamsala Tea	£18.00	39	£702
1	Bigfoot Breweries	(503) 555-99	Dharamsala Tea	£18.00	39	£702
1	Svensk Sjöföda AB	08-123 45 67	Dharamsala Tea	£18.00	39	£702

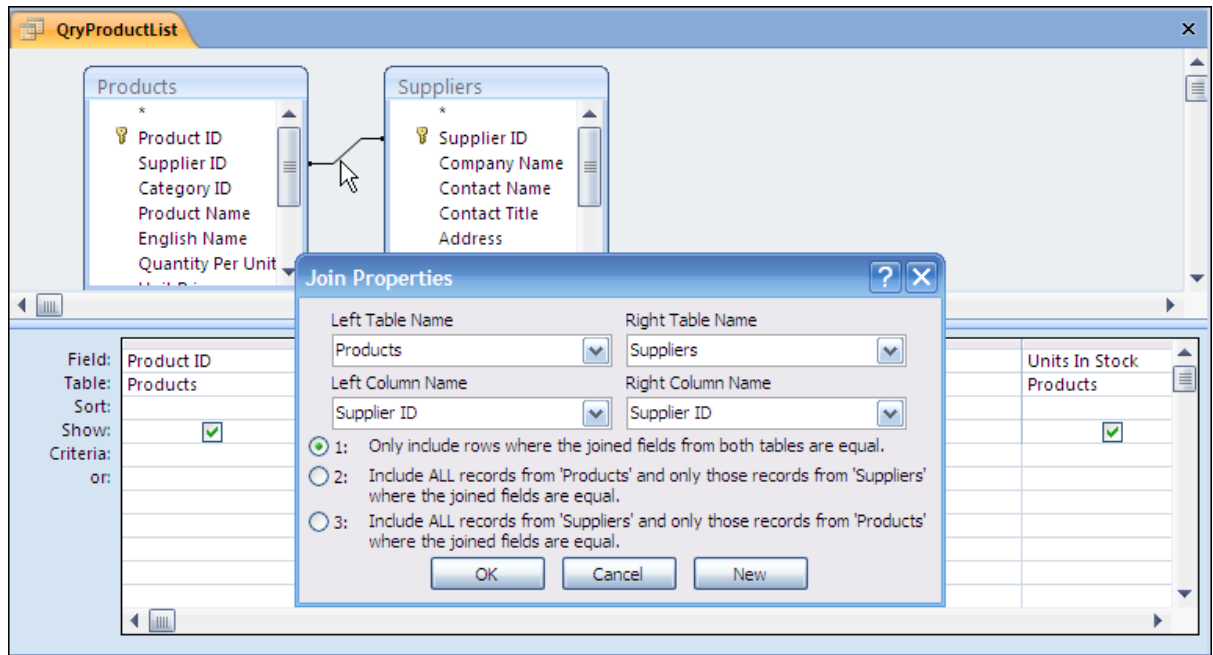
There are not many occasions where this combination is required and if this is done between two large tables, the query will run very slowly. This dynaset was generated by tables of seventy seven and twenty nine records – imagine the size when the table sizes are in the tens of thousands!

## Changing the Join Types

When more than one table is added to a query and there are relations between the tables, if the join types have not been changed elsewhere then the default relationship is where the two sides are equal.

Depending on the data involved, the join types might need to be changed.

# Microsoft Access – Join Types



The join type can be changed by double clicking on the line that joins the two tables together. This brings up the join properties.

There are three options

1. Only include rows where the joined fields from both tables are equal.
2. Include all records from Left Table and only those records from Right Table where the joined fields are equal.
3. Include All records from Right Table and only those records from Left Table where the joined fields are equal

The first option will show the products and their suppliers. (Only for those products that have supplier information filled in.)

The second option will show all the products with the corresponding supplier information where it has been filled in.

The third option will show all of the suppliers with their products. This could include Suppliers where they do not have an associated product.